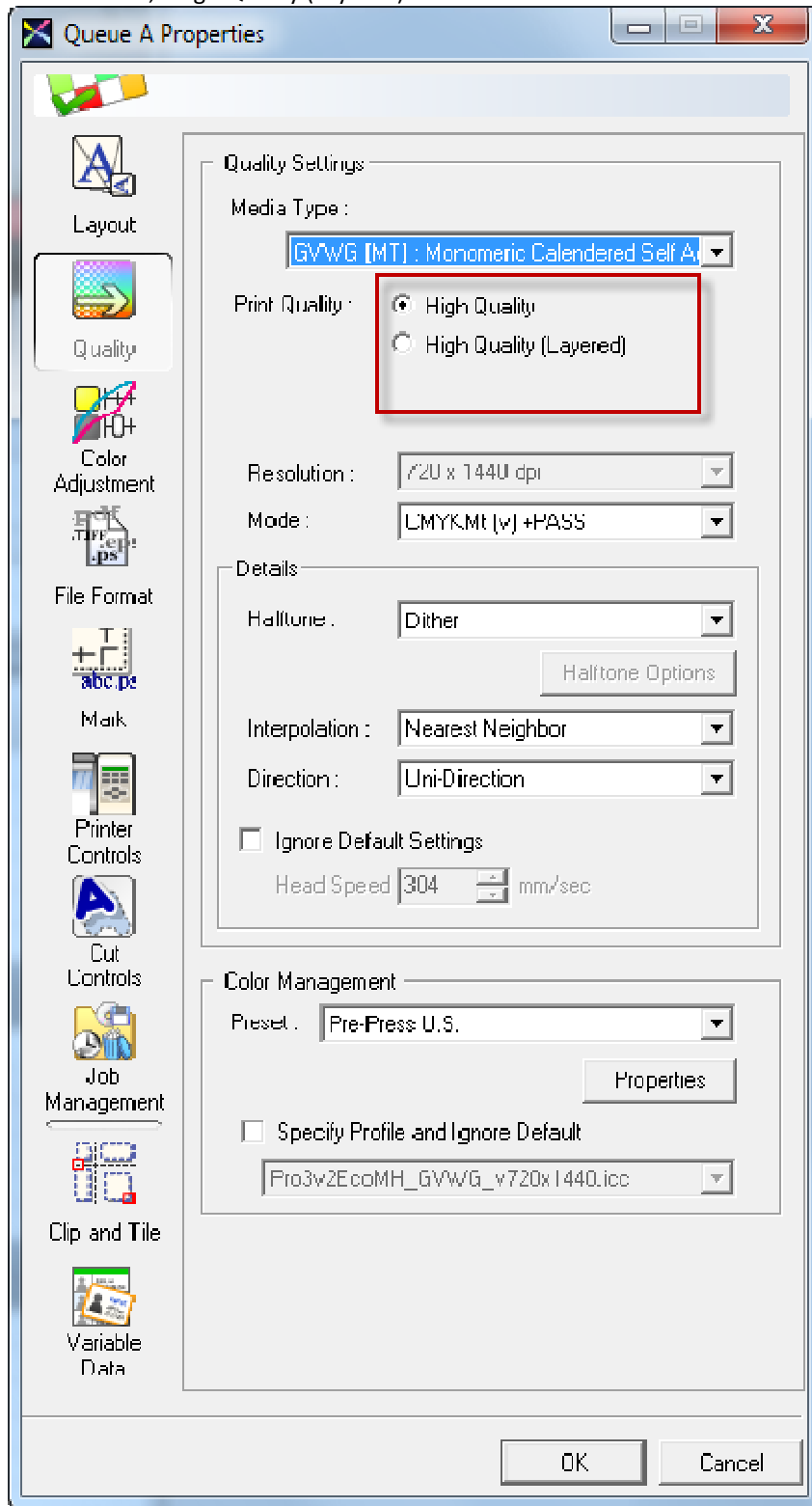
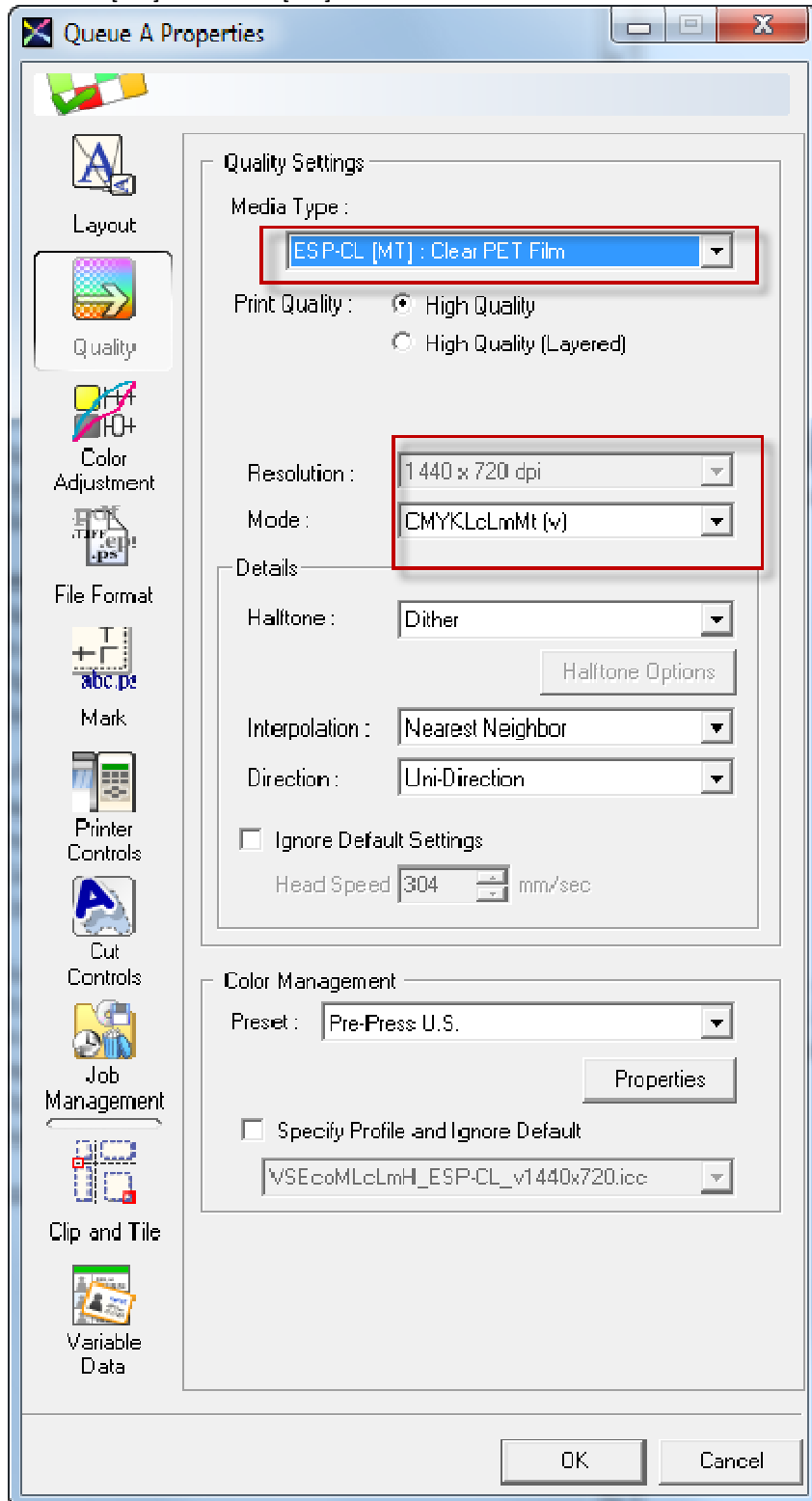


RolandVersaWorks 4.2

1. On XC-540MT, "High Quality (Layered)" has been added.



2. On VS-640/540/420/300, the print mode "CMYKLcLm->Mt" has been added to High Quality (Layered) for ESP-CL[MT] and SP-CLT[MT].



3. At [View] > [Job Log], the ink consumption for saved or reprinted or printed job after finishing RIP is now displayed in the list.
(Previously, only the ink consumption for the jobs which contain RIP process is displayed.)

Please update via Roland@NET.

Imagine.